

T12N

R4W



**Office of the Monroe County Surveyor**  
**Trohn Enright-Randolph**

---

Health Services Building  
119 West 7<sup>th</sup> Street  
Bloomington, IN 47404  
Phone: (812) 349-2570

Dear User,

The following images were obtained in 2017 by the Office of the Monroe County Surveyor from the State Imaging and Microfilm Laboratory at the Indiana State Archives. The field notes and plats for Owen County are stored on microfilm Reel 4659 at the Indiana State Archives. Each page provided by the State Imaging and Microfilm Laboratory is approximately 18MB. Our office combined the pages by Township & Range and reduced the resulting pdfs. This process may have caused some degradation in quality. We will provide unreduced images of specific pages if required. Please contact us at 812-349-2570 or at [SurveyorsOffice@co.monroe.in.us](mailto:SurveyorsOffice@co.monroe.in.us) to request a higher quality image of any specific page.

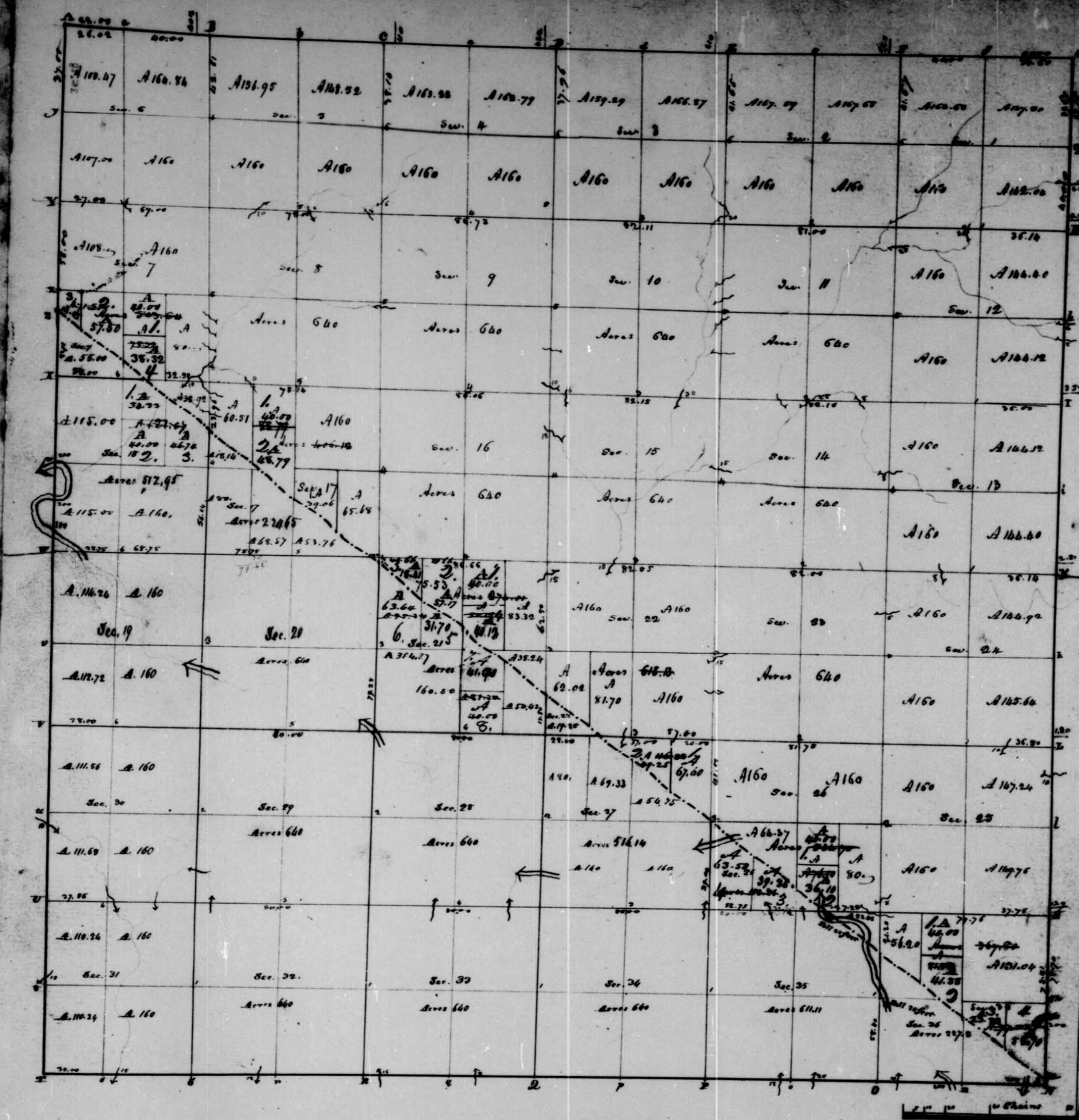
The pdfs are bookmarked with the original page numbers as assigned by the State Imaging and Microfilm Laboratory.

Be prepared to provide the county name, reel number, and the required page numbers when requesting full sized images.

If you would like a DVD of an entire county, please provide us with one DVD per county along with a self-addressed, stamped envelope.

Trohn Enright-Randolph  
Monroe County Surveyor





*Township N<sup>o</sup>. XII North, Range N<sup>o</sup>. IV West 2<sup>nd</sup> M.*

Surveyed by John McDonald 1885  
& John Collet 1887

Description of the Soil on the interior Sectional lines.

Proven Stations	Quality &c.	Between stations	Quantity &c.	Between Stations	Quantity &c.
15-26	Broken Land Rich Soil Sugar, Oak & Maple & Spice	14-20	Broken Land Timber Oak, Beech &c. Sugar & Spice	22-23	Hilly & Broken Timber Beech, Oak, Oak, Poplar & Pine
16-23	Forest Land Timber Oak, Oak, Sugar, Maple & Spice	10-20	Same Same Same Same	15-22	Same
17-24	Broken Land Same Same Same	17-24	Same Same Same Same	14-18	Same
18-25	ditto	18-10	Same Same Same Same	10-15	Part level part Hilly Timber Same
19-26	ditto	17-18	Same Same Same Same	10-11	Hilly & Broken Timber Same
20-27	ditto	17-18	Same Same Same Same	9-10	Same
21-28	Broken Land Timber Oak, Beech &c. Sugar & Spice	7-8	Hilly & Broken Beech, Oak, Oak, Poplar & Spice	2-3	Rolling & rich Beech, Sugar, Poplar, Oak &c. Maple & Pine
22-27	Same Timber Oak, Sugar, Beech &c.	6-7	Same Same	25-26	Hilly & Broken Timber Same
23-28	Same Oak, Beech &c.	5-6	Same Same	23-26	Same
24-29	Broken Land Rich Soil Beech, Sugar &c.	16-17	Same Same	23-24	Same
25-30	Same Oak, Beech, Sugar &c.	8-14	Same Same	10-23	Part level part Broken Timber Same
26-20	Same Same Same Same	9-4	Same Same	13-14	Level & rich Timber Same
27-21	Same Same Same Same	5-8	Same Same	11-18	Rolling & Broken Timber Same
28-22	Same Oak, Beech &c.	16-21	Hilly & Broken Timber Same	11-12	Same
29-23	Broken Land Same Same Same	15-16	Same Same	2-11	Same
30-24	Same Same Same Same	9-16	Same Same	1-2	Rolling rich Timber Same
31-25	Broken Land Rich Soil Same Same Same	1-12	Same Same	25-26	Hilly & Broken Timber Same
32-26	Same Same Same Same	14-9	Same Same	24-25	Level & rich Same
33-27	Rolling rich Sugar, Beech, Oak &c.	3-4	Same Same	13-26	Same



T. N. H. R. No 4 W 3<sup>rd</sup> Mer. Ind.

65.00 At Brook 15 links wide, Course NW  
 80.00 Set a post for the cor of Sec 5, 6, 7 & 15 from which  
 Sugar 18 in dia: bears S 48 E 53 links dist, & a  
 Do. 20 " " " N 33 W 50 " "  
 Hilly rich land; Timber Sugar, Beech & Walnut,  
 Poplar Oak &c.

## West Between Sec 6 &amp; 7

40.00 Set a 1/4 sec post from which,  
 Beech 15 in dia: bears S 3 E 38 lks dist, & a  
 Do. 24 " " " N 5 E 47 " "  
 61.00 To a swamp  
 69.10 Intersect the West Boundary at the post cor of  
 Sec 1 & 12 T. 11. N. R. 5 W and set a post for the cor  
 of Sec 7 & 6. Hilly rich land; Timber Sugar.

## North Between Sec 5 &amp; 6.

37.00 At Brook 8 lks wide, Course W  
 40.00 Set a 1/4 sec post from which,  
 Beech 20 in dia: bears East 18 lks dist, & a  
 Do. 18 " " " N 80 W 21 " "  
 58.00 At Poplar 30 in dia:  
 80.00 Intersect the North Boundary at the post cor of Sec  
 31 & 32 T. 12. N. R. 4 W

Surveyed by  
 Saml. Holmes. D.S.

John Hutchison & J. Chaintreux  
 Jacot. Barnet.

## North Between Sec 10 &amp; 11

24.50 a W. Oak 20 in dia:  
 40.00 at 1/4 sec. post from which Poplar 36 N 4 E 19, Sugar 24 S 10 W 31  
 80.00 Set temp. post - Hilly land, timber Oak, Sugar, Poplar &c.

Township No 12 North of Range No 4 West 3<sup>rd</sup> Mer. Ind.

Ch. Lks.

## South Boundary

West On the South Boundary of Sec 36 T. 12. N. R. 4 W.  
 10.00 At Brook 200 links wide, Course S  
 40.00 Set a 1/4 sec post from which,  
 Beech 12 in dia: bears S 34 W 14 lks dist, & a  
 Do. 13 " " " N 30 E 17 " "  
 44.25 At Oak 200 lks wide, Course NW  
 65.50 At Brook 10 lks wide, " NW  
 80.00 Set a post for the cor of Sec 35 & 36 from which,  
 Beech 5 in dia: bears S 78 W 26 lks dist, & a  
 W Oak 14 " " " N 74 E 10 " "  
 Good land; Timber Sugar Beech & Hickory

## West On the South Boundary of Sec 35 T. 12. N. R. 4 W.

25.00 At Brook 20 lks wide, Course N.  
 40.00 Set a 1/4 sec post from which,  
 Beech 5 in dia: bears S 75 W 8 lks dist, & a  
 Do. 3 " " " N 44 W 10 " "  
 43.50 At Brook 12 lks wide, Course N.  
 80.00 Set a post for the cor of Sec 34 & 35 from which,  
 Beech 12 in dia: bears S 70 E 4 links dist, & a  
 Poplar 30 " " " N 27 W 49 " "  
 Good land; Timber Sugar Beech & Oak.

## West On the South Boundary of Sec 34 T. 12. N. R. 4 W.

40.00 Set a 1/4 sec post from which,  
 Beech 16 in dia: bears N 44 E 18 lks dist, & a  
 Sassafras 12 " " " S 52 W 14 " "  
 80.00 Set a post for the cor of Sec 33 & 34 from which,  
 Beech 12 in dia: bears S 82 W 34 lks dist, & a  
 Do. 5 " " " N 25 E 26 " "  
 Poor hilly Beech land.



## T. No 12 N.R. No 4 W 2nd Mer Ind.

West On the South Boundary of Sec. 33. T. 12 N.R. 4 W  
 24.50 A. Brook 8 lks mid, course W.W.  
 40.00 Set a 7/4 sec post from which  
 Beech 18 in dia: bears S 75 W. 8 lks dist. & a  
 Do 3 " " " N 18 E 39. "  
 70.00 A. Brook 15 lks mid, course W.W.  
 80.00 Set a post for the cor of Sec 32 & 33 from which  
 Sugar 12 in dia: bears S 26 E. 11 lks dist. & a  
 Do 9 " " " N 26 W. 13. "  
 Poor hilly Beech. land.

West On the South Boundary of Sec. 32. T. 12 N.R. 4 W  
 10.00 Set a 7/4 sec post from which  
 Beech 16 in dia: bears N 43 W. 42 lks dist. & a  
 Do 12 " " " S 41 E. 18 " "  
 48.00 A. Brook 12 lks mid, course S  
 80.00 Set a post for the cor of Sec 31 & 32 from which  
 Gum 10 in dia: bears N 60 E. 9 lks dist. & a  
 Beech 4 " " " S 22 W. 17. "  
 Hilly Beech land.

West On the South Boundary of Sec. 31. T. 12 N.R. 4 W  
 40.00 An R. Oak 16 in dia: stands for the 7/4 sec cor.  
 70.00 Intersect the N.W. Range line 50 links North  
 of the Temp. post cor of Sec 1.6 31 & 36. and set  
 a post for the cor of T. 11 & 12 N.R. 3 4 & 5 W  
 from which an Elm 16 in dia: bears S 5 E. 15 lks dist.  
 and a Beech 36 " " " N 51 W. 40. "  
 Poor land; Timber Beech Oak &c. May 5. 1811

## East Boundary.

North On the East Boundary of Sec. 36. T. 12 N.R. 4 W  
 4.30 Intersect the N Boundary of Harrison's Pur-

## T. No 12 N. R. No 4 W 2nd Mer Ind.

chase and set a post for the cor of Sec. 36. from which  
 a Maple 16 in dia: bears S 71 W. 21 lks dist. &  
 Beech 14 " " " S 15 E. 43. "

Surveyed by

James Holmes Ld.

Commenced at the cor on the N.E. Boundary  
 of Harrison's Purchase on a line between Sec.  
 31 & 36. T. 12 & 13 N.R. 3 & 4 W.

North Continued the line between Sec. 31 & 36. Var. 6. 20. E.  
 28.50 To Oak River 200 links mid, course W.  
 35.70 Set a 7/4 sec post from which  
 Sugar 12 in dia: bears N 52 E. 10 lks dist. & a  
 Beech 10 " " " S 72 E. 5 " "  
 75.70 Set a post for the cor of Sec 25 & 36 from which  
 Sugar 9 in dia: bears N 37 E. 19 lks dist. & a  
 Beech 8 " " " S 57 W. 13. "  
 Sand bar; Soil 2nd rate; Timber mostly Beech  
 Some Hickory Poplar Gum &c. Part rather wet.

North On the East Boundary of Sec. 25. T. 12 N.R. 4 W  
 40.00 Set a 7/4 sec post from which  
 Hickory 18 in dia: bears S 34 W. 18 lks dist. & a  
 Beech 10 " " " N 47 E. 28. "  
 67.00 A. Brook 10 lks mid, course W.  
 80.00 Set a post for the cor of Sec 24 & 25 from which  
 Hickory 10 in dia: bears N 60 E. 1 lks dist. & a  
 Beech 9 " " " S 60 W. 29. "  
 Land similar; middling good farming land.

North On the East Boundary of Sec. 24. T. 12 N.R. 4 W  
 40.00 Set a 7/4 sec post from which an  
 Oak 36 in dia: bears S 74 E. 3 lks dist. & a  
 Beech 5 " " " S 66 W. 10 " "



80.00 Set a post for the cor of sec. 13 & 24 from which  
 Beech 12 in dia: bears N 43 E. 7 lks dist. & a  
 Poplar 30 " " N 45 W. 17 "  
 Land level; timber Beech, Sugar, Poplar,  
 ash, Oak, &c. Good land for farming.

North On the East Boundary of sec. 13. T. 12 N. R. 4 W.  
 40.00 Set a 4 sec post from which  
 Beech 8 in dia: bears N 25 W. 11 lks dist. & an  
 Elm 18 " " S 23 E. 25 "  
 80.00 Set a post for the cor of sec. 12 & 13 from which  
 Elm 8 in dia: bears N 33 W. 28 lks dist. & a  
 Beech 24 " " N 42 E. 22 "  
 Land very rich and good for farming timber  
 Beech Sugar Poplar, Walnut &c. A little rolling.

North On the East Boundary of sec. 12. T. 12 N. R. 4 W.  
 34.00 A Brook 8 lks mid, corner W.  
 38.00 A Do. 6 " " " "  
 40.00 Set a post for the cor of sec. 12 from which  
 Poplar 24 in dia: bears North 21 lks dist. & a  
 W Oak 36 " " S 51 W. 10 "  
 80.00 Set a post for the cor of sec. 1 & 12 from which  
 Sugar 14 in dia: bears S 57 E. 15 lks dist. & a  
 Poplar 40 " " S 57 W. 20 "  
 Land same.

North On the East Boundary of sec. 1. T. 12 N. R. 4 W.  
 20.00 A Brook 25 lks mid, corner W.  
 40.00 Set a 4 sec post from which a  
 Beech 18 in dia: bears N 72 E. 19 lks dist. & a  
 Do. 24 " " S 30 W. 39 "  
 80.00 Set a temp post for the cor of sec. 1 & 6. S. 1/36.

S. 12 & 13. N. R. 3 & 4 W.  
 Land rich and good for farming.

### North Boundary

West On a Random line On the South Bdy of sec. 36.  
 T. 13. N. R. 4 W.

22.50 A Brook 12 lks mid, corner S.  
 40.00 Set a temp post for the cor of sec. 35 & 36.  
 80.00 Set a temp post for the cor of sec. 35 & 36.  
 Land very rich and good for farming timber  
 Beech Sugar, Oak, Poplar, &c.

West On a Random line On the South Bdy of sec. 35.  
 T. 13. N. R. 4 W.

9.00 A Brook 8 lks mid, corner S.W.  
 22.00 " 12 " " " "  
 40.00 Set a temp post for the cor of sec. 34 & 35.  
 42.00 A Brook 3 lks mid, corner S.  
 76.00 " 12 " 5 " " " "  
 80.00 Set a temp post for the cor of sec. 34 & 35.  
 Land similar. Good for farming.

West On the Random line On the South Boundary of  
 Sec. 34. T. 13. N. R. 4 W.

7.00 A Brook 12 lks mid, corner S.  
 40.00 Set a temp post for the cor of sec. 33 & 34.  
 80.00 Set a temp post for the cor of sec. 33 & 34.  
 Land rolling and 2nd rate: middling good for  
 farming timber Beech & Sugar.

West On a Random line On the South Bdy of sec. 33.  
 T. 13. N. R. 4 W.

5.00 A Brook 5 lks mid, corner S.



## T. N. 12. N. R. No 4 W. 2nd Mer. Ind.

- 40.00 Set a temp. 7/4 Sec post  
 80.00 Set a temp. 7/4 post for the cor of Sec 32 T33.  
 Sand the same

West QuakRandom line On the South W. of Sec. 33  
 T. 13. N. R. 4 W.

- 40.00 Set a temp. 7/4 Sec post.  
 52.00 A Brook 12 lbs mid. lower N.  
 75.00 A Do 6 " " " N.  
 80.00 Set a temp. 7/4 post for the cor of Sec 31 T32  
 Sand same

West QuakRandom line On the South W. of Sec. 31  
 T. 13. N. R. 4 W.

- 40.00 Set a temp. 7/4 Sec post  
 62.00 Intersect the Range line 350 lbs North of the  
 Temp. 7/4 post cor of Sec 1. 6 31 T36. T. 12 T3 N. R. 4 W.  
 Sand same

East On the Line line On the South W. of Sec. 31  
 T. 13. N. R. 4 W. r 5.50' E.

- 22.00 Set the temp. 7/4 Sec post at the intersection from which  
 Buck 9 in dia. bears S41 E. 9 lbs dist. S  
 Do 9 " " " N62 W 35 " "  
 62.00 Set the temp. 7/4 post on the Line line for the cor of Sec.  
 31 T32 from which  
 Sugar 18 in dia. bears N71 W 13 lbs dist. S  
 Buck 10 " " " S80 E. 30 " "

East On the Line line On the South W. of Sec 32  
 T. 13. N. R. 4 W. r 5.50'

- 40.00 Set the temp. 7/4 Sec post on the Line line from which  
 Buck 10 in dia. bears N46 W 13 lbs dist. S

## T. N. 12. N. R. No 4 W. 2nd Mer. Ind. 65

- Buck 18 in dia. bears S32 E. 15 lbs dist. S  
 80.00 Set a post for the cor of Sec. 32 T33 from which  
 Sassafras 12 in dia. bears S30 E. 15 lbs dist. S  
 Sugar 20 " " " N61 W 35 " "

East On a line between South Boundary of Sec 33  
 T. 13. N. R. 4 W.

- 40.00 Set the temp. 7/4 Sec post on the Line line from which  
 Buck 4 in dia. bears S53 W 8 lbs dist. S  
 Do 9 " " " N33 E. 41 " "  
 80.00 Set the temp. 7/4 post on the Line line for the cor of  
 Sec. 33 T34 from which  
 Buck 14 in dia. bears N24 W 24 lbs dist. S  
 Do 4 " " " S5 W 7 " "

East On the Line line On the South W. of Sec. 34  
 T. 13. N. R. 4 W.

- 40.00 A W Oak 30 in dia. stands for the cor of Sec.  
 80.00 Set the temp. 7/4 post on the Line line for the cor of Sec  
 34 T35 from which  
 Sugar 18 in dia. bears S27 W 40 lbs dist. S  
 Buck 15 " " " N20 E. 51 " "

East On the Line line On the South Boundary of Sec.  
 35. T. 13. N. R. 4 W.

- 40.00 Set the temp. 7/4 Sec post at the Line line from which  
 Buck 30 in dia. bears N61 W 18 lbs dist. S  
 Do 14 " " " N84 E. 39 " "  
 80.00 Set a post for the cor of Sec. 35 T36 on the Line  
 line from which  
 Buck 27 in dia. bears N13 W 13 lbs dist. S  
 Sugar 9 " " " N64 W 45 " "



T. N. 12. N. R. N. 4 W 2nd Mer and

East On the line on the South Boundary of Sec 36.  
T. 13. N. R. 4 W.40.00 Set the temporary post on the line from which  
Nicky 6 in dia. bears N 76 E. 9 lks dist. 8 a

Sugar 12, " " N 65 W 32, "

80.00 Intersect the Range line 484 links South of the Temp  
post cov. of T. 12 N 13 N. R. 3 W 4 + set apart from  
whichever Beech 18 in dia. bears N 80 W 11 lks dist.  
under an Elm. 24, " " S 83 E. 49, "Surveyed by  
William Harris D.S.

## West Boundary

North On the East Boundary of Sec. 36. T. 12 N. R. 5 W.

40.00 Set a 1/4 Sec post from which  
Beech 5 in dia. bears N 117 W 3 lks dist. 8 a

Do 14, " " S 28 E. 110, "

43.00 At Brook 15 lks mid, Corner S. W.

80.00 Set a post for the cov. of Sec. 25 & 36. from which  
Sugar 17 in dia. bears N 63 E. 25 lks dist. 8 a  
Beech 15 " " N 69 W 29, "  
Scribble Beech land.

North On the East Boundary of Sec. 25 T. 12 N. R. 5 W.

35.50 At Brook 10 lks mid, Corner S. E.

40.00 Set a post for the cov. of 1/4 Sec from which  
W Oak 9 in dia. bears S 73 E. 19 lks dist. 8 a

Sugar 10, " " S 71 W 35, "

80.00 Set a post for the cov. of Sec. 24 & 25 from which  
Beech 12 in dia. bears N 39 E. 21 lks dist. 8 a  
Do 6, " " S 55 W 6, "  
Scribble Beech land.

T. N. 12. N. R. N. 4 W 2nd Mer and 67

North On the East Boundary of Sec. 24 T. 12 N. R. 5 W.

40.00 Set a 1/4 Sec post from which  
B. Oak 6 in dia. bears S 25 E. 9 lks dist. 8 a

Do 12, " " N 85 W 14, "

80.00 Set a post for the cov. of Sec. 13 & 24 from which  
Beech 13 in dia. bears N 37 E. 28 lks dist. 8 a

Do 5, " " S 25 W 34, "

Scribble Beech land.

North On the East Boundary of Sec. 13. T. 12 N. R. 5 W.

10.00 At Brook 200 lks mid, Corner N.

25.50, " Do, " " " " E.

39.50, " Do, " " " " S. W.

40.00 Dr. Sec. cov. falls in creek No bearings

80.00 Set a post for the cov. of Sec. 12 & 13 from which  
Nicky 115 in dia. bears S 23 W 35 lks dist. 8 a

Maple 3, " " S 73 W 30, "

Net bottom Timber Elm. ash, Maple.

North On the East Boundary of Sec. 12. T. 12 N. R. 5 W.

22.00 Intersected the N. E. Boundary of Har-  
rison's Purchase, and set a post for the cov. of Sec  
7 & 12 from which

Beech 6 in dia. bears West 26 lks dist. 8 a

Do 4, " " S 28 E. 35, "

Sand hill Timber Beech

May 6. 1811

Surveyed by

James Holmes D.S.

North On the East Boundary of Sec. 12 Continued U. C. 25 E.

18.00 Set a 1/4 Sec post from which

Beech 9 in dia. bears S 38 W 18 lks dist. 8 a

Sugar 12, " " S 40 E. 20, "

58.00 Set a post for the cov. of Sec. 17 &amp; 12 from which







- Beck 10 in dia. bears N1E. 21 mts dist. 8a  
 Do. 10 " " " S26W 35 " "  
 62.60 A Brook 10 mts wide, corner 2<sup>nd</sup>.  
 76.50 Intersect the East Boundary 180 mts South of the  
 cor of sec. 24 & 25. and set apart for the cor of sec.  
 24 & 25 from which,  
 Sugar 8 in dia. bears S29E. 15 lks dist. 8a  
 Do. 10 " " " N31W 39 " "  
 Land 2<sup>nd</sup> rate land; Timber Buck. Poplar &  
 W Oak. &c. N.Y. Spruce.

## North Between Sec. 23 &amp; 24

- 21.15. NW Oak. 28 in dia.  
 40.00 Set a 74 sec post from which,  
 Beck 18 in dia. bears N12W 30 lks dist. 8a  
 Do. 12 " " " S37W 33 " "  
 50.15. Sugar 25 in dia.  
 60.45 A Run 6 lks wide corner 2<sup>nd</sup>.  
 80.00 Set apart for the cor of sec. 13, 14, 23 & 24 from which,  
 Beck 20 in dia. bears N45E. 46 lks dist. 8a  
 Hick. 10 " " " N49E 20 " "  
 Land rolling part low Timber W Oak, Buck,  
 Sugar, Elm, Walnut, &c. N.Y. Spruce.

## East Between Sec. 13 &amp; 24

- 20.40 A Beck 24 in dia. "  
 23.00 A Brook 8 lks wide, corner 2<sup>nd</sup>.  
 40.00 Set a 74 sec post from which,  
 R Oak 8 in dia. bears S74E. 14 lks dist. 8a  
 Beck 12 " " " N76W 10 " "  
 76.14 Intersect the East Boundary 281 mts South of the  
 post cor of sec. 13 & 24 from which,  
 Beck 20 in dia. bears S71W 33 lks dist. 8a

- Beck 12 in dia. bears N2E 12 lks dist. "  
 Land level and rich. Timber Buck. Sugar  
 Walnut, Oak &c. N.Y. Spruce.

## North Between Sec. 13 &amp; 14

- 14.00 A Beck 10 in dia.  
 40.00 Set a 74 sec post from which,  
 Poplar 30 in dia. bears N34E. 25 lks dist. 8a  
 Beck 10 " " " N18W 10 " "  
 47.60 A Brook 8 lks wide, corner 2<sup>nd</sup>.  
 57.40 " W Ash 36 in dia.  
 80.00 Set apart for the cor of sec. 11, 12, 13 & 14 from which,  
 Sugar 12 in dia. bears S10W 15 lks dist. 8a  
 W. Ash. 15 " " " N32W 10 " "  
 Land level & rich. Timber Buck, Sugar, Oak &  
 Poplar, Oak &c. N.Y. Spruce.

## East Between Sec. 12 &amp; 13

- 16.00 NW Elm 30 in dia.  
 40.00 Set a 74 sec post from which,  
 Beck 4 in dia. bears N41W 25 lks dist. 8a  
 Do. 3 " " " N6E 10 " "  
 58.10 NW Oak. 24 in dia.  
 76.00 Intersect the East Boundary 352 mts South of the  
 post cor of sec. 12 & 13 & set apart for the cor of sec.  
 12 & 13 from which,  
 Beck 24 in dia. bears N41W 14 lks dist. 8a  
 Ironwood 5 " " " S41E 16 " "  
 Land level & rich; Timber Buck, Sugar, Walnut,  
 W Oak, Poplar, &c. N.Y. Spruce.

## North Between Sec. 11 &amp; 12

- 18.00 A Beck 10 in dia.



- 40.00 Set a 7<sup>th</sup> sup post from whike,  
W Oak 40 in dia: bears N 70 E. 15 lbs dist, 8 a  
Beck 18 " " " S 22 W 19 " "  
53.50 A Hick. 20 in dia:  
72.60 A Brook 25 lbs mid, Corner W  
80.00 Set a post for the cov of sec 1, 2, 11, & 12 from whike,  
Sugar 18 in dia: bears N 82 W. 16 lbs dist, 8 a  
Beck 3 " " " S 37 E. 10 " "  
Sand 1<sup>st</sup> 1/2 mile Rolling 2<sup>nd</sup> rate,  
" 2<sup>nd</sup> " " " Hilky " "  
Timber 12 in. Sugar Poplar, Oak, &c. W 9 Spin.

- East Return Sec. 1 & 2  
21.10 A Beck 10 in dia:  
32.60 A Brook 20 lbs mid, Corner S  
30.10 " Spring " " W  
40.00 Set a 7<sup>th</sup> sup post from whike,  
Beck 18 in dia: bears N 45 W 13 lbs dist, 8 a  
Lo. 15 " " " N 33 E 28 " "  
59.00 A Sugar 18 in dia:  
76.14 Intersect the East Boundary 451 lbs South of the post,  
cov of sec 11 & 12 & set a post for the cov of sec. 1 & 2  
from whike, Beck 24 in dia: bears N 67 W 31 lbs dist,  
and also Sugar 18 " " " S 22 E. 53 " "  
Sand rolling and rich Timber Sugar Beck &  
Oak, & W Oak. W 9 Spin.

- North Return Sec 1 & 2  
4.00 A Spring Corner S  
19.50 A Sugar 18 in dia:  
40.00 Set a 7<sup>th</sup> sup post from whike,  
Beck 10 in dia: bears N 61 W 19 lbs dist, 8 a  
Lo. 15 " " " S 66 E 31 " "

- 52.00 A Beck 12 in dia:  
81.67 Intersect the W Boundary 640 lbs East of the post,  
cov of sec. 35 & 36. T. 13. N. R. 4 W and set a post  
for cov of sec. 1 & 2 from whike,  
Beck 10 in dia: bears S 28 W. 9 lbs dist, 8 a  
Sugar 12 " " " N 62 W 31 " "  
Sand rolling rich Timber Beck, Walnut,  
Oak & Poplar &c. W 9 Spin.

## North Return Sec. 34 &amp; 35.

- 40.00 Set a 7<sup>th</sup> sup post from whike a  
W Oak 36 in dia: bears N 64 W. 9 lbs dist, 8 a  
Beck 8 " " " S 7 E. 34 " "  
80.00 Set a post for the cov of sec 26, 27, 34 & 35 from whike,  
Hornbeam 5 in dia: bears S 39 E 15 lbs dist, 8 a  
Beck 8 " " " N 16 W 27 " "  
Sand and Timber Beck Oak, Sugar. W 9 Spin.

## East Return Sec. 26 &amp; 35.

- 22.95 A Poplar 30 in dia:  
26.00 A Brook 8 lbs mid, Corner W  
40.00 Set a 7<sup>th</sup> sup post from whike,  
Sugar 14 in dia: bears N 36 W. 27 lbs dist, 8 a  
Poplar 15 " " " N 20 E 17 " "  
43.00 A Brook 15 lbs mid, Corner N. W.  
52.75 Intersect the N. E. 137 of Harrison's Purchase  
and set a post on the East side of an Island in  
Mill Creek from whike,  
Oak 12 in dia: bears N 54 W 25.3 lbs dist, 8 a  
Sugar 10 " " " S 22 W 25.0 " "  
This post stands about 3 cts below an Excellent  
mill  
West Oak Run line between Sec. 26 & 35.



## T. No. 12. N.R. No. 4 W. 2nd Mer. Ind.

- 40.00 Set a 74 Su post from which  
 W Oak 40 in dia: bears S 70 E. 15 lbs dist, 8 a  
 Buck 18 " " S 20 W 19 " "  
 53.50 A Hickory 20 in dia:  
 72.60 A Brook 25 lbs mid, Corner W  
 80.00 Set apart for the cov of Sec 1, 2, 11, & 12 from which  
 Sugar 18 in dia: bears N 82 W. 16 lbs dist, 8 a  
 Buck 3 " " S 37 E. 10 " "  
 Sand 1st mill Rolling 2nd track:  
 " 2nd " Hilby " "  
 Timber Buck, Sugar Poplar, Oak, &c. W. Spruce.

- East Return Sec. 1 & 2  
 21.10 A Buck 10 in dia:  
 32.60 A Brook 20 lbs mid, Corner S  
 30.10 " Spring " W  
 40.00 Set a 74 Su post from which  
 Buck 18 in dia: bears N 45 W 13 lbs dist, 8 a  
 Do. 15 " " N 33 E 28 " "  
 59.00 A Sugar 18 in dia:  
 76.14 Intercept the East Boundary 451 lbs South of the post  
 Cov of Sec 1 & 2 & set apart for the cov of sec 1 & 2  
 from which, Buck 24 in dia: bears N 67 W 31 lbs dist  
 and also Sugar 18 " " S 22 E 53 " "  
 Sand rolling and rich Timber Sugar Buck &  
 Oak, & W Oak. W. Spruce.

- North Return Sec 1 & 2  
 4.00 A Spring Corner S  
 19.50 A Sugar 18 in dia:  
 40.00 Set a 74 Su post from which  
 Buck 10 in dia: bears N 61 W 19 lbs dist, 8 a  
 Do. 15 " " S 66 E 31 " "

## T. No. 12. N.R. No. 4 W. 2nd Mer. Ind.

- 52.00 A Buck 12 in dia:  
 81.67 Intercept the W Boundary 640 lbs East of the post  
 Cov of Sec 35 & 36. T. 13. N.R. 4 W and set apart  
 for cov of sec 1 & 2 from which  
 Buck 10 in dia: bears S 28 W. 9 lbs dist, 8 a  
 Sugar 12 " " N 62 W 31 " "  
 Sand rolling rich Timber Buck, Walnut,  
 Oak & Poplar &c. W. Spruce.

- North Return Sec. 34 & 35  
 40.00 Set a 74 Su post from which a  
 W Oak 36 in dia: bears N 64 W. 9 lbs dist, 8 a  
 Buck 8 " " S 7 E. 34 " "  
 80.00 Set apart for the cov of sec 26, 27, 34 & 35 from which  
 Horn beam 5 in dia: bears S 39 E 15 lbs dist, 8 a  
 Buck 8 " " N 16 W 27 " "  
 Sand hard Timber Buck Oak, Sugar. W. Spruce.

- East Return Sec. 26 & 35  
 22.95 A Poplar 30 in dia:  
 26.00 A Brook 8 lbs mid, Corner W  
 40.00 Set a 74 Su post from which  
 Sugar 14 in dia: bears N 36 W 27 lbs dist, 8 a  
 Poplar 15 " " N 20 E 17 " "  
 43.00 A Brook 15 lbs mid, Corner NW  
 52.75 Intercept the N.E. 137 of Harrison's Purchase  
 and set apart on the East side of an Island in  
 mill creek from which  
 Oak 12 in dia: bears N 54 W 25.3 lbs dist, 8 a  
 Sugar 10 " " S 22 W 25.0 " "  
 This post stands about 3 ch below an Excellent  
 mill  
 West Oak & Sand on line between Sec. 26 & 35.



I N<sup>o</sup> 12 N.R. N<sup>o</sup> 4 W 2<sup>nd</sup> Mer Ind.

- 5275 Old fra<sup>t</sup> at the B<sup>y</sup> of Har. Pm.  
 1450 A Brook 6<sup>th</sup> mds, Corner N.W.  
 2725 Intersect the N.E. B<sup>y</sup> of Har. Pm. at the falls  
 of Mill Creek.  
 Land very broken Timber Buck, Sugar & Poplar  
 N.Y. Spr.

North Between Sec 26 & 27

- 2980 A Brook 200<sup>th</sup> mds, Corner W.  
 3920 Intersect the N.E. B<sup>y</sup> of Har. Pm. and set  
 apart for cov of Sec 26 & 27 from which  
 Sugar 14 in dia<sup>r</sup> bears N 10 W 20 the dist. 8 a  
 W Oak 15 " " " 140 W 25 " "  
 Land Broken Soil rich Timber Oak Buck &  
 Sugar. N.Y. Spr. Feb 22<sup>nd</sup> 1815.

North Between Sec 26 & 27. Continued

- 3900 To Harrison's Purchase  
 2059 A Buck 18 in dia<sup>r</sup>.  
 4100 Set apart for the cov of Sec 22, 23, 26 & 27 from which  
 a Buck 8 in dia<sup>r</sup> bears N 71 W 11 the dist.  
 2 a W Walnut 12 " " " N 18 E 7 " "  
 Land Hilly cy. do rich Timber Walnut, Buck  
 Ash, Poplar, &c, N.Y. Spr.

West On a Random line between Sec 23 & 26.

- 4000 Set a temp<sup>t</sup> 74 Sec post.  
 8175 Intersect the N.W. line 4<sup>th</sup> the North of the post cov  
 of Sec 22, 23, 26 & 27  
 Greater part land. balance Hilly & rolling  
 Timber W Oak, Buck, Sugar, Ash, &c, N.Y. Spr.

East On the Town line between Sec 23 & 26

- 4087 Set the temp<sup>t</sup> 74 Supers at the ar. dist.

I N<sup>o</sup> 13 N.R. N<sup>o</sup> 4 W 2<sup>nd</sup> Mer Ind.

- on the Town line from which  
 Buck 26 in dia<sup>r</sup> bears S 59 W 27 the dist. 8 a  
 10 " " " N 56 E 13 " "  
 8175 To the cov of Sec 23, 24, 25 & 26.

North Between Sec 22 & 23

- 2150 A Buck 12 in dia<sup>r</sup>.  
 2650 A Spring Run. Corner E.  
 3350 " " " " " N.  
 3800 A Brook 15<sup>th</sup> mds, Corner W.  
 4000 Set a temp<sup>t</sup> Sec post from which  
 W Oak 15 in dia<sup>r</sup> bears N 76 W 16 the dist. 8 a  
 W Walnut 30 " " " S 56 W 38 " "  
 3640 A W Oak 16 in dia<sup>r</sup>.  
 8000 Set apart for the cov of Sec 14, 15, 22 & 23 from which  
 R Oak 14 in dia<sup>r</sup> bears S 84 E 12 the dist. 8 a  
 Buck 10 " " " S 33 E 18 " "  
 Land 1/3<sup>rd</sup> mds Hilly and broken  
 " 2<sup>nd</sup> 3<sup>rd</sup> " " " some  
 Timber W Oak, Buck, Poplar Walnut  
 N.Y. Spr. Hornham Iron Mine &c.

West On a Random line between Sec 14 & 23

- 4000 Set a temp<sup>t</sup> 74 Sec post.  
 8200 Intersect the N.W. line 62<sup>th</sup> the North of the post  
 cov of Sec 14, 15, 22 & 23  
 Land part level and part hilly, rolling Timber  
 Buck, Sugar, W Oak, R Oak, Ash &c, N.Y.  
 Dogt Spr. wood

East On the Town line between Sec 14 & 23

- 4100 Set the temp<sup>t</sup> 74 Supers at the ar. dist on the Town  
 line from which Buck 15 in dia<sup>r</sup> bears South 49<sup>th</sup> the dist.



T. N. 12. N. R. No 477 2<sup>nd</sup> Mer. And

82.00 To the cor of sec. 13. 14. 23 & 24  
 11 Oak 18 in dia: bears N 42 E. 23 lks dist.

North Return Sec 14 & 15.

20.08 A Hick 12 in dia:

40.00 Set a 74 sec post from which

Sugar 8 in dia: bears South 31 N. 39 lks dist. 8<sup>th</sup>  
 Sugar 6 " " " N 33 E. 36 " "

45.50 A Run 15 lks mid, corner N. W.

30.15 A Beek 24 in dia:

80.00 Set a post for the cor of sec 10. 11. 12 & 15 from which

Beek 14 in dia: bears N 31 W. 15 lks dist. 10<sup>th</sup>  
 Hick 20 " " " N 75 E. 11 " "

Land set 1/2 mile level and part rolling  
 2<sup>nd</sup> 1/2 hilly and rolling Timber Oak.  
 119 Spruce & Ironwood

West Return Sec 11 & 14

5.20 A Spring Branch corner N. W.

25.00 A Brook 8 lks mid, corner N. W.

39.00 " " 25 " " " N. W.

40.00 Set a temp. 74 sec post.

45.64 A Spring Brook corner S. E.

82.16 Intercept the N & S line 147 lks South of the post  
 cor of sec 10. 11. 12 & 15

Land Rolling & Broken Timber Beek Sugar  
 Poplar Oak. 119 Dogwood.

East On the line between Sec 11 & 14

41.08 Set the temp. 74 sec post at the cor dist on the line  
 from which Sugar 10 in dia: bears N 18 W. 13 lks dist.

and a Beek 10 " " " N 36 W. 9 " "  
 82.16 To the cor of sec 11. 12. 13 & 14

T. N. 12. N. R. No 477 2<sup>nd</sup> Mer. And

North Return Sec 10 & 11

23.50 A Run 3 lks mid, corner N.

26.80 A Beek 20 in dia:

38.50 A Spring Branch corner S. W.

40.00 Set a 74 sec post from which

Beek 14 in dia: bears N 44 E. 38 lks dist. 8<sup>th</sup>  
 Sugar 10 " " " N 82 E. 18 " "

40.75 A Spring Run corner N.

45.75 " " " " " "

48.70 A Beek 12 in dia:

80.00 Set a post for the cor of sec 2. 3. 10 & 11 from which

11 Oak 18 in dia: bears N 75 W. 35 lks dist. 8<sup>th</sup>  
 10. 24 " " " N 46 W. 4 " "

Land set 1/2 mile hilly and broken: 2<sup>nd</sup> 1/2 mile  
 same. Timber N Oak, Beek, Sugar, Pop.  
 lvs. &c. 119 Spruce. Green Briars &c.

West On a Random line between Sec 2 & 11

40.00 Set a temp. 74 sec post.

81.00 Intercept the N & S line 60 lks North of the post  
 cor of sec 2. 3. 10 & 11

Land part level and part rolling Timber  
 N Oak Walnut Sugar Beek & 119 Spruce

East On the line between Sec 2 & 11

40.50 Set the temp. 74 sec post at the cor dist on the line  
 from which Sugar 12 in dia: bears N 9 E. 18 lks dist.

and a Sugar 18 " " " N 46 W. 8 " "

81.00 To the cor of sec 1. 2. 11 & 12

North Return Sec 2 & 3

6.50 A Brook 20 lks mid, corner S. W.

15.00 " " " " " " S. E.



- 18.50 A Buck 15 in dist in the line  
 40.00 Set a 74 supst from whike,  
 7 Buck 10 in dist bears N 22 W 9 lbs dist. 8<sup>th</sup>  
 10. 10 " " " N 19 E. 19 " "  
 65.60 A Buck 18 in dist  
 81.65 Intercept the N. B. 610 lbs East of the  
 Post cor of sec 34 135. T 13 N 14 W and set a  
 " " " 2 1/2 3 from whike  
 Sugar 12 in dist bears N 45 E 16 lbs dist. 8<sup>th</sup>  
 Corn 4 " " " N 37 W 19 " "  
 Sand rolling and soil Timber Buck, Sugar  
 & Poplar, W Oak. &c. 119 Spec.

## North Return Sec 33 &amp; 34

- 20.00 A Buck 15 lbs mid, Comes N.W.  
 40.00 Set a 74 supst from whike,  
 W Oak 18 in dist bears N 21 E 15 lbs dist. 8<sup>th</sup>  
 Hick 10 " " " N 49 W 16 " "  
 80.00 Set a post for the cor of sec 27, 28 33 134 from whike  
 a Sugar 18 in dist bears N 2 E 10 lbs dist. 8<sup>th</sup>  
 Buck 6 " " " N 11 W 20 " "  
 Sand Broken & soil good Timber Buck Sugar  
 & Oak. 119 Spec. July 22<sup>nd</sup> 1815.

## East Return Sec 27 &amp; 34

- 40.00 Set a 74 supst from whike,  
 7 Buck 7 in dist bears N 5 E 16 lbs dist. 8<sup>th</sup>  
 Corn 5 " " " N 23 W 6 " "  
 49.68 A Buck 20 lbs mid, Comes N.  
 80.00 To the cor of sec 26, 27 34 135.  
 Sand Broken Timber Buck Sugar Oak &c.

## North Return Sec 27 &amp; 28.

- 15.71 A Buck 200 lbs mid, Co. W  
 40.00 Set a 74 supst from whike,  
 Hick 18 in dist bears N 45 E 23 lbs dist. 8<sup>th</sup>  
 Poplar 15 " " " N 42 E 34 " "  
 80.00 Set a post for the cor of sec 21, 22, 27 128 from whike  
 a Sugar 10 in dist bears N 6 W 7 lbs dist. 8<sup>th</sup>  
 7 Buck 12 " " " N 35 W 37 " "  
 This line broken with soil Timber Oak, Buck,  
 Sugar &c. 119 Spec.

## East Return Sec 22 &amp; 27

- 22.10 Intercept the N.E. B. 610 lbs of Harrison's Pen-  
 chase and set a post for the cor of sec 22 & 27  
 from whike, Hick 18 in dist bears N 80 W 10 lbs dist  
 and a Sugar 12 " " " East 16 " "  
 This line broken with soil Timber Oak Sugar  
 & Buck &c. 119 Spec.

## West On a Random line between Sec 22 &amp; 27

- 25.00 Spring.  
 40.00 Set a temp 74 supst.  
 57.00 Intercept the N.E. Harrison's Purchase.  
 Sand hilly and very broken Timber Buck,  
 Oak, Poplar Sugar. 119 Spec.

## East On the True line between Sec 22 &amp; 27

- 40.00 Set the temp 74 supst on the True line from whike  
 a Buck 24 in dist bears N 65 W 7 lbs dist. 8<sup>th</sup>  
 Sugar 15 " " " N 35 E 30 " "  
 57.00 To the cor of sec 22, 23, 26, 27.

## North Return Sec 21 &amp; 22.

- 17.52 Intercept the N.E. 130 of Harrison's Pen. and set a



post for the cor of sec. 21 & 22 from which  
Sugar - in dia. bears N 6 E 12 lbs dist. 8 a  
Beck 8 " " " N 41 W 9 " "  
Sand & Berkm trib. Timber Oak Beck

North Between Sec. 21 & 22 Continued

17.50 To B of Harris's Pw.

22.50 Set a 7/4 sup post from which  
W Oak. 12 in dia. bears N 37 W 8 lbs dist. 8 a  
Beck 12 " " " N 82 E 14 " "

59.50 N W Elm 18 in dia.

70.00 A Brook 15 lbs mid. corner N. E.

80.00 Set a post for the cor. of sec. 15, 16, 21 & 22 from which  
a Beck. 8 in dia. bears N 69 W 45 lbs dist. 8 a  
W Elm. 12. " " " N 64 E 25 " "  
Land hilly and very broken Timber Beck  
Oak & Poplar W of Log road.

West On a Random line between Sec. 15 & 22

40.00 Set a temporary 7/4 sec post

117.00 A Run 15 lbs mid. corner S. W.

82.05 Intersect the West Boundary or N & S line 250  
links South of the first cor of sec. 15, 16, 21 & 22  
Land hilly and rolling Timber Beck Sugar  
& Ash. Poplar &c. W of Spruce.

East On the Line between Sec. 15 & 22.

11.00 Set the temporary 7/4 sup post at the ar ditch on the line  
from which Beck 16 in dia. bears N 78 W 31 lbs dist.  
and a Do. 20 " " " N 28 E 24 " "

82.05 To the cor of sec. 15, 16, 21 & 22.

North Between Sec. 15 & 16.

17.50 A W Oak 14 in dia. in

40.00 Set a 7/4 sup post from which  
Beck 15 in dia. bears N 75 W 50 lbs dist. 8 a  
Do. 12 " " " N 85 E 7 " "

62.00 A Sugar 18 in dia.

62.50 A Brook 18 lbs mid. corner N. E.

80.00 Set a post for the cor of sec. 9, 10, 15 & 16 from which  
Beck 15 in dia. bears N 47 W 31 lbs dist. 8 a  
Do. 18 " " " N 9 E 18 " "

Land rolling Timber Beck, W Oak, Poplar  
W of Log road.

West On a Random line between Sec. 10 & 15.

29.50 A Brook 30 lbs mid. corner S.

40.00 Set a temporary 7/4 sec post

72.00 A Run 6 lbs mid. corner S. W.

82.15 Intersect the N & S line 130 lbs South of the post  
cor of sec. 9, 10, 15 & 16.

Land post level and part hilly & rolling, Timber  
Beck, Sugar, W Oak, N of Log road Spruce &  
Green Birch

East On the Line between Sec. 15 & 16.

11.07 Set the temporary 7/4 sec post at the ar ditch on the line  
from which Beck 10 in dia. bears N 69 E 16 lbs dist.  
and a Do. 12 " " " N 30 W 25 " "

82.15 To the cor of sec. 10, 11, 14 & 15.

North Between Sec. 9 & 10

8.00 A Brook 10 lbs mid. corner N. E.

15.00 " Do. " E.

20.60 A Beck 18 in dia.

40.00 Set a 7/4 sec post from which  
Sugar 18 in dia. bears N 89 E 25 lbs dist. 8 a



## T. N. 12. N. R. No. 4. N. 2nd Mer. Ind.

W Oak 36 in dia: bears N 34 W 30 lbs dist.  
 58.00 A Buck 12 in dia:  
 80.00 Set apart for the cov of sec 3, 4, 9 & 10 from which  
 Logwood 4 in dia: bears N 4 W 20 lbs dist. S  
 Buck 24 " " " N 49 E 26 " "  
 Sand rolling Timber Buck, Sugar, W Oak.  
 Poplar, &c. N 9 Log & Spruce. V<sub>2</sub>

West Quakandam line between Sec 3 & 10  
 40.00 Set a temp 1/4 supert  
 82.11 Intersect the N 13 line 15 to 16 lbs South of the post cov  
 of sec 3, 4, 9 & 10  
 Sand, Kelly and Broken Timber W Oak Buck &  
 Sugar N 9 Spruce Hornbeam, Green Berries &

East On the line between Sec 3 & 10.  
 41.05 Set the temp 1/4 supert at the an dist on the line  
 from which Sugar 20 in dia: bears N 6 E 25 lbs dist.  
 and a No. 14 " " " N 74 W 22 " "  
 82.11 To the cov of sec 2, 3, 10 & 11

North Between Sec 3 & 4.  
 28.50 A W Oak 24 in dia:  
 40.00 Set a 1/4 supert from which  
 Sugar 10 in dia: bears N 39 E 14 lbs dist. S  
 Buck 10 " " " N 73 E 12 " "  
 61.30 A Buck 24 in dia:  
 77.96 Intersect the N 13 line 422 lbs East of the  
 post cov of sec 33 & 34 T. 13. N. R. 4 W and set a  
 " " " 374 from which  
 Buck 14 in dia: bears N 89 W 9 lbs dist. S  
 No. 18 " " " N 22 E 14 " "  
 Sand rolling Timber Buck, Sugar, W Oak, Spruce.

## T. N. 12. N. R. No. 4. N. 2nd Mer. Ind.

North Between Sec 32 & 33  
 40.00 Set a 1/4 supert from which  
 Buck 8 in dia: bears N 89 E 19 lbs dist. S  
 No. 5 " " " N 89 W 7 " "  
 80.00 Set apart for the cov of sec 28, 29, 32 & 33  
 Buck 15 in dia: bears North 35 lbs dist. S  
 No. 30 " " " N 10 E 16 " "  
 Sand Broken good for farming? Timber  
 Buck, Sugar, &c. N 9 Spruce T. 17 22 & 15.

East Between Sec 28 & 33  
 27.60 A Buck 10 lbs mid, Corner N.  
 40.00 Set a 1/4 supert from which [by Buck 4 lbs mid, Cor. N.  
 Sugar 15 in dia: bears N 59 W 18 lbs dist. S  
 Buck 15 " " " N 78 E 16 " "  
 65.70 A Buck 10 lbs mid, Corner N.  
 80.00 To the cov of sec 27, 28, 33 & 34  
 This line is over broken land. Timber Oak,  
 Buck, Sugar.

North Between Sec 28 & 29  
 40.00 Set apart for the cov of sec from which  
 Oak 20 in dia: bears N 56 E 20 lbs dist. S  
 Sugar 20 " " " N 30 W 40 " "  
 80.00 Set apart for the cov of sec 20, 21, 28 & 29 from which  
 a. This post stands in a creek 200 lbs mid  
 Corner N W.  
 Sand & Broken rich Timber Oak, Buck.

West Between Sec 21 & 28.  
 40.00 Set apart for the cov of 1/4 sec from which  
 Buck 10 in dia: bears N 2 E 25 lbs dist. S  
 Sugar 14 " " " N 15 W 43 " "



T. N. 12. N. R. N. 4 W 2nd Mer. Ind.

8000 To the cov of sec 20, 21, 28 & 29.  
Sand Broken brick. Timber Oak, Sugar Buds  
&c, Wg Skin.

North Between Sec 20 & 21.

4000 Set a 1/4 sec post from which  
Sugar 10 in diam bears N 26 W 47 lbs dist. 80  
Do 12 " " " N 35 W 25 " "

79.25 Intersub the N.E. corner of Harris' old Purchase  
and set apart for the cov of sec 21 & 22 from which  
Hick 18 in diam bears N 50 E 26 lbs dist. 80  
W Oak 24 " " " N 55 W 30 " "  
Sand Broken brick Timber Oak Beech &c  
Wg Skin.

North Between Sec 20 & 21. Continued

79.25 To N.E. 1/3 of Har. Pm.  
75 Set apart for the cov of sec 16, 17, 20 & 21 from which  
W Oak 36 in diam bears N 39 W 14 lbs dist. 80  
Hick 12 " " " N 71 E 12 " "

West On a Random line between Sec 16 & 21.

4000 Set a temp 1/4 sec post  
86.66 Intersub the N.E. line 47 lbs South of the  
post cov of sec 16, 17, 20 & 21.

Sand Hilly & Broken 3rd rate; Timber Beech,  
Oak, Poplar, &c. Wg Skin. & Green hives &c.

East On the line between Sec 16 & 21.

43.33 Set the temp 1/4 sec post at the ar ditch on the line  
from which Dogwood 4 in diam bears N 66 E 9 lbs dist.  
and a Beech 4 " " " N 44 W 15 " "  
86.66 To the cov of sec 15, 16, 21 & 22.

T. N. 12. N. R. N. 4 W 2nd Mer. Ind.

North Between Sec 16 & 17.

23.60 A Beech 12 in diam in /

4000 Set a 1/4 sec post from which  
Beech 10 in diam bears N 44 W 20 lbs dist. 80  
Do 6 " " " N 38 E 21 " "

8000 Set apart for the cov of sec 8, 9, 16 & 17 from which  
Beech 10 in diam bears N 40 W 20 lbs dist. 80  
Sugar 15 " " " N 82 E 33 " "

Sand 1/2 mile very hilly and broken  
2 1/2 sec same. Timber Beech Sugar B  
Oak, Wg of all kinds.

West On a Random line between Sec 9 & 16.

4000 Set a temp 1/4 sec post.

86.06 Intersub the N.E. line 29 miles South of the post.  
Cov. of sec 8, 9, 16 & 17.

Sand Hilly and Broken Timber Beech W Oak,  
& Poplar. Wg Skin.

East On the line between Sec 9 & 16.

43.03 Set the temp 1/4 sec post at the ar ditch on the line  
from which Sugar 5 in diam bears N 75 E 8 lbs dist.  
and a Sugar 4 " " " N 15 W 25 " "

86.06 To the cov of sec 9, 10, 15 & 16.

North Between Sec 8 & 9.

21.60 A Beech 12 in diam.

38.00 A Spring Brook Co. W.

4000 Set a 1/4 sec post from which  
Dogwood 3 in diam. Bears N 44 W 29 lbs dist.  
& a Beech 12 " " " N 80 E 10 " "

58.06 A Hick 12 in diam.

8000 Set apart for the cov of sec 4, 5, 8 & 9 from which



## I. A. R. M. No. 477 2nd Mer And

Dogwood 3 in diam. bears N 38 W. 11 lbs dist. 8 a  
 Ironwood 3, " " S 36 E. 10 " "  
 Sand 1st ft with rolling 2nd ft. Rolling broken.  
 Timber same.

West On a Random line between Sec 4 & 9

40.00 Set a temp. 1/4 sup post

86.73 Intersect the West Boundary 18 lbs North of the  
 post cor of Sec 4, 5, 8 & 9

Sand Part rolling; Balance very hilly Timber  
 Buck, Sugar, W Oak. &c. N 7 Spin.

East On the true line between Sec 4 & 9

43.36 Set the temp. 1/4 sup post at the an dist on the true line  
 from which Sugar 16 in diam. bears N 39 W. 24 lbs dist  
 and a Loc. 12, " " N 4 E. 27, "

86.73 To the cor of Sec 3, 4, 9 & 10

North Between Sec 4 & 5

8.00 A Brook 6 lbs wide, Corner S. W.

24.60 A W. Ash 18 in diam.

40.00 Set a 1/4 sup post from which

Sugar 24 in diam. bears S 36 E. 14 lbs dist. 8 a  
 Buck 4 " " N 46 W. 17, "

78.14 Intersect the N Boundary 11 lbs West of the post  
 cor of Sec 3, 2 & 3, 1, 13. N. R. 4 W. and set a post  
 " " 4 & 5. from which a

Buck 4 in diam. bears S 5 W. 5 links dist. 8 a

Loc. 3. " " N 36 E. 4. " "

Land rolling & rich Timber Buck, Sugar, & Poplar. W. Spin.

North Between Sections 31 & 32.

40.00 Set a 1/4 Sec. post from which a

## I No 12. N. R. No. 477. 2nd Mer And

Wickory 2 1/2 in diam. bears S 70 E. 23 links dist. 8 a

Loc. 18. " " N 82 W. 26 " "

80.00 Set a post for the cor of Sec. 29, 30, 31 & 32. from which a  
 Buck 20 in diam. bears N 85 W. 7 links dist. 8 a

Loc. 18. " " S 82 E. 53. " "

This mile broken land. Timber. Buck. & Oak. W. Spin.

East On a Random line between Sec. 29 & 32.

14.00 A Brook 20 links wide Course S.

40.00 Set a temp. 1/4 Sec. post in a Branch 4 links wide Course S.

80.00 Intersect the A. & S. line at the post cor. of Sec. 28, 29, 33  
 & 38.

West On the True line between Sections 29 & 32.

40.00 Set a 1/4 Sec post on the True line from which a

Buck 18 in diam. bears N 53 E. 32 links dist. 8 a

Wormbeam 4 in " " N 68 W. 22. " "

80.00 To the post cor. of Sec. 29, 30, 31 & 32.

West Between Sec. 30 & 31.

20.25 A Brook 20 links wide, Course South.

38.50 A Loc. 10. " " S. E.

40.00 Set a 1/4 Sec post from which a

Buck 12 in diam. bears S 20 W. 30 links dist. 8 a

Loc. 15. " " N 35 E. 12. " "

67.56 Intersect the West Boundary line at the post cor of Sec.  
 25 & 30. T 12. N. 65 W.

This line is over very broken land. Timber. Buck. Oak &c.

North Between Sec. 29 & 30.

15.00 A Brook 20 links wide Course N.

40.00 Set a 1/4 Sec post from which a

Wickory 18 in diam. bears S 45 E. 23 links dist. 8 a



T. N. 12. N. 12. N. 477 2<sup>nd</sup> Mer. Ind.

Poplar 15 in diam bears N 42 E 34 1/2 the dist.  
80.00 Set apart for the cor of sec. 19, 20, 29, 30 from whike  
Sugar 12 in diam bears N 82 E 27 1/2 the dist. & a  
Do 20 " " " N 117 W 20 " "  
This line level, rich soil Timber Bech, Sugar,  
&c. 119 Spiv.

West Return Dec. 20 + 29.

40.00 Set a 1/4 sec post from whike,  
Sugar 14 in diam bears S 31 E 27 1/2 the dist. & a  
Bech 10 " " " N 54 E 16 " "

80.00 Set apart for the cor of sec. 19, 20, 29, 30 from whike,  
This line is broken soil rich. Timber Bech, Sugar  
119 Spiv.

West Return Dec. 19 + 30

40.00 Set a 1/4 sec post from whike,  
B. Oak 20 in diam bears N 67 E 40 1/2 the dist. & a  
Bech 15 " " " N 33 W 39 " "

68.10 Intersect the Range line and set apart for the  
cor of sec. 19 + 30 from whike,  
Bech 18 in diam bears N 50 E 20 1/2 the dist. & a  
Sugar 20 " " " N 40 W 15 " "  
Sand Broken rich soil Timber Oak & Bech  
119 Spiv.

North Return Dec. 19 + 20 T. 12. N. 477

27.20 Alouk 200 the mid, course N. W.  
40.00 Set a 1/4 sec post from whike,  
Bech 14 in diam bears N 18 E 17 1/2 the dist. & a  
Do 13 " " " N 55 E 13 " "

80.00 Set apart for the cor of sec. 17, 18, 19 + 20 from whike  
a Bech 12 in diam bears S 80 W 15 1/2 the dist. & a

T. N. 12. N. 12. N. 477 2<sup>nd</sup> Mer. Ind.

Sugar 14 in diam bears N 2 E 20 1/2 the dist.  
Sand Broken rich soil 119 Spiv.

East Return Dec. 17 + 20

40.00 Set apart for the cor of sec. 17 from whike,  
W Oak. 14 in diam bears S 30 E 40 1/2 the dist. & a  
Oak. 36 " " " S 30 W 4 " "

78.75 Intersect the N. E. 13<sup>th</sup> of Harrison's Purchase  
and set apart for the cor of sec. 17 + 20 from whike  
a Bech. 10 in diam bears S 20 W 17 1/2 the dist. & a  
Hick 10 " " " S 54 E 15 " "  
Sand Broken rich soil. Timber Oak, Bech, &  
119 Spiv.

West Return Dec. 17 + 20

0.70 Intersect the N. E. 13<sup>th</sup> of Harrison's Purchase  
20 the North of the post.  
Corrected East to the Sec post.

West Return Dec. 18 + 19

40.00 Set a 1/4 sec post from whike,  
Bech 20 in diam bears N 18 W 6 1/2 the dist. & a  
Do 10 " " " N 8 E 10 " "

52.00 Alouk 200 the mid, course N. W.

68.75 Intersect the Range line and set apart for the  
cor of sec. 18 + 19 from whike,  
Bech 30 in diam bears N 10 W 20 1/2 the dist. & a  
Sugar 15 " " " N 15 E 36 " "  
Sand Broken & Rich Timber Oak & Bech 119 Spiv.

North Return Dec. 17 + 18 T

35.75 A Bech 20 in diam  
40.00 Set a 1/4 sec post from whike,  
W Oak. 30 in diam bears N 84 E 25 1/2 the dist. & a



- Sugar 10 in dia<sup>r</sup> bears S 86 W 19 the dist.
- 56.04 Interest the N.E. 1/4 of Harrison's Purchase  
and set apart for the cor of sec. 17 & 18 from which,  
Buck 30 in dia<sup>r</sup> bears S 54 W 19 the dist. S  
No. 20 " " " S 50 E 22 " "  
Sand Broken Strick Timber Oak, Buck, &c. W. Spruce  
North Return Sec. 17 & 18
- 56.04 N. Harrison's Purchase
- 12.50 Spring Brook Co. W.
- 16.00 A Spruce 14 in dia<sup>r</sup>
- 22.50 Spring Brook Corner W.
- 23.96 Set apart for the cor of Sec. 7 & 8 from which,  
Buck 18 in dia<sup>r</sup> bears N 21 W 36 the dist. S  
Do 6 " " " N 85 E 18 " "  
Sand hilly, and very broken 2<sup>nd</sup> rate Timber  
Buck Oak W. Oak, Poplar, &c. W. Spruce.

- West On a Random line between Sec. 7 & 18.
- 1.00 Spring Branch Corner W.
- 9.00 A Brook 10 the side, Corner W.
- 32.50 Interest the N.E. 1/4 of Harrison's Purchase  
60 the North of the cor.  
Sand hilly, and broken Timber Buck, Sugar, &  
W. Oak, &c. W. Spruce.

X X X  
East Corrected the line between Sec. 7 & 18.

- X X X X  
East Return Sec. 7 & 18.
- 38.00 Interest the (Bona) line of Harrison's Purchase  
and set apart for the cor of Sec. 7 & 18 from which  
Buck 18 in dia<sup>r</sup> bears S 47 W 19 the dist. S  
Sugar 15 " " " S 52 E 5 " "  
Sand Broken Strick Timber Buck & Sugar W.

Spin

- West On a Random line between Sec. 8 & 17
- 40.00 Set a temp<sup>l</sup> 74 the post.
- 59.00 A Brook 4 the side Corner W.
- 78.14 Interest the N.E. 1/4 line 260 the North of the  
Post cor of Sec. 7 & 17 & 18.

- East On the True line between Sec. 8 & 17
- 39.07 Set the temp<sup>l</sup> post at the ar dist on the true line  
from which, Hick 10 in dia<sup>r</sup> bears N 81 W 6 the dist.  
and a Poplar 18 " " " S 51 E 10 " "  
78.14 To the cor of Sec. 7 & 17 & 18  
Sand very hilly and broken 2<sup>nd</sup> rate.  
Timber Poplar Buck, Oak, &c. W. Spruce.

- North Return Sec. 7 & 18.
- 9.25 Spring run 3 the side Co. W.
- 10.16 A W. Oak 20 in dia<sup>r</sup>
- 12.14 " Run 8 the side, Corner W.
- 20.00 " Spring Run " S.
- 23.41 " " " " S.
- 26.50 " " " " S.
- 40.00 Set a 74 support from which,  
Hick 12 in dia<sup>r</sup> bears S 50 W 3 the dist. S  
Maple 10 " " " S 58 E 16 " "  
79.00 A Poplar 20 in dia<sup>r</sup>
- 80.00 Set apart for the cor of Sec. 5, 6, 7 & 18 from which,  
Buck 8 in dia<sup>r</sup> bears S 75 W. - the dist. S  
Hick 14 " " " S 80 E 30 " "  
Sand 10 ft. with very hilly and broken 2<sup>nd</sup>  
for same, 2<sup>nd</sup> rate, Timber Buck, W. Oak & S  
Oak from Sugar



